



MPR-215F-PE

Pharmaceutical Refrigerator with Freezer

176/39 L (Ref/Frz)

Providing a complete storage solution; refrigerator and freezer in one unit.

The MPR-215F combines high-performance refrigeration with a -30°C freezing environment within a small footprint for flexible, reliable and convenient sample storage.

Optimum Temperature Distribution

Fan-forced air circulation system in the refrigerator offers better uniformity and fast recovery of temperature after routine door openings to minimise fluctuations.

Excellent Stability

A unique defrost system in the refrigerator operates only short cycles as required to prevent unnecessary temperature spikes. The freezer compartment is manually defrosted for the most stable temperature performance.

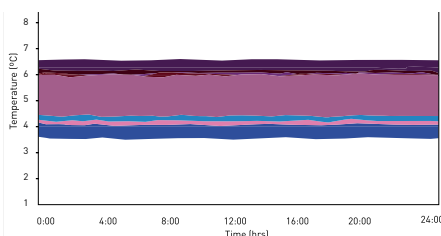
Precise Control & Monitoring

Microprocessor controller, combined with accurate sensors, maintains precise temperatures within the refrigerator and freezer, whilst a comprehensive alarm system alerts of any temperature deviations.



Two Temperatures, One Unit

Secure storage at both freezing and refrigerated temperatures, within a minimal footprint, is an ideal solution for installation in smaller spaces.



Usability with Performance

PHCbi refrigerators are designed specifically for laboratory applications with precise performance even under demanding conditions.



Safe & Secure Storage

Multiple safety systems such as high/low temperature audible and visual alarms, remote alarm, door open alarm and keyed door locks.

Pharmaceutical Refrigerator with Freezer



Optimized for Superior Usability

One unit with dual temperature control requires minimal installation space.

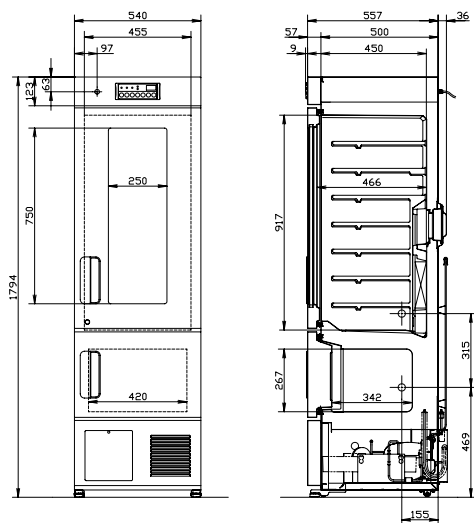
Two door design reduces air loss during door opening and makes efficient use of space in front of the unit.

PHCbi Design

Refrigeration systems within both compartments are specially designed for demanding scientific and laboratory storage. Compressors are application specific, components are carefully matched and systems are laid out to ensure high-performance cooling with ultimate reliability.

Quiet Operation

Two specially designed compressors offer quiet operation for installation in busy working environments without disruption.



MPR-215F-PE

| Model Number | | MPR-215F-PE |
|---|--------|---|
| External Dimensions (W x D x H) ¹⁾ | mm | 540 x 557 x 1794 |
| Internal Dimensions (W x D x H) | mm | 455 x 466 x 917 (Ref) 420 x 342 x 267 (Frz) |
| Volume | litres | 176/39 (Ref/Frz) |
| Net Weight | kg | 86 |
| Performance | | |
| Cooling performance ²⁾ | °C | +5 / -30 |
| Temperature setting range (Ref/Frz) | °C | +2 to +14/ -35 to -15 |
| Temperature control range (Ref/Frz) | °C | +2 to +14/ -30 to -20 |
| Control | | |
| Controller | | Microprocessor, non-volatile memory |
| Display | | LED |
| Temperature sensor | | Thermistor |
| Refrigeration | | |
| Cooling Method | | Fan forced air circulation (Ref) / Direct cooling (Frz) |
| Defrost method | | Cyclical defrost (Ref) / Manual (Frz) |
| Refrigerant | | HFC |
| Insulation material | | PUF |
| Insulation thickness | mm | 40 / 60 |
| Construction | | |
| Exterior Material | | Painted Steel |
| Interior Material | | Styrol resin (Ref) / Painted aluminium (Frz) |
| Outer Doors | qty | 2, glass window (1) |
| Outer Door Lock | | Y |
| Shelves | qty | 3 (Ref) / 1 (Frz) |
| Max. load - per shelf | kg | 20 / 10 (Ref/Frz) |
| Max. load - total | kg | 70 |
| Access Port | qty | 2 |
| Access Port Position | | Left |
| Access Port Diameter | Ø mm | 30 |
| Casters | qty | 4 |
| Interior light | | Fluorescent (Ref) |
| Alarms [R = Remote Alarm, V = Visual Alarm, B = Buzzer Alarm] | | |
| Power Failure | | R |
| High Temperature | | V-B-R |
| Low Temperature | | V-B-R |
| Door open | | V-B |
| Electrical and Noise Level | | |
| Power Supply | V | 230V |
| Frequency | Hz | 50 |
| Noise Level ³⁾ | dB [A] | 35 |
| Options | | |
| Temperature recorders | | |
| - Circular type | | MTR-G3504C-PE |
| - Chart paper | | RP-G3504-PW |
| - Ink pen | | PG-RB-PW |
| - Continuous strip type | | MTR-0621LH-PE (Ref) / MTR-4015LH-PE (Frz) |
| - Chart paper | | RP-06-PW (Ref) / RP-40-PW (Frz) |
| - Ink pen | | - |
| - Recorder housing | | MPR-S30-PW |
| Optional communication systems | | |
| Ethernet interface (LAN) | | MTR-L03-PW |
| Digital interface (RS232C/RS485) | | MTR-480-PW |

¹⁾ Exterior dimensions of main cabinet only, excluding handle and other external projections - See dimensions drawings on website for full details.

²⁾ Air temperature measured at refrigerator / freezer centre, ambient temperature +30°C, no load

³⁾ Nominal value - Background noise 20dB(A)



WolfLabs

Pricing on any accessories shown can be found by keying the part number into the search box on our website.

The specifications listed in this brochure are subject to change by the manufacturer and therefore cannot be guaranteed to be correct. If there are aspects of the specification that must be guaranteed, please provide these to our sales team so that details can be confirmed.

www.wolflabs.co.uk

Tel : 01759 301142

Fax : 01759 301143

sales@wolflabs.co.uk

Please contact us if this literature doesn't answer all your questions.